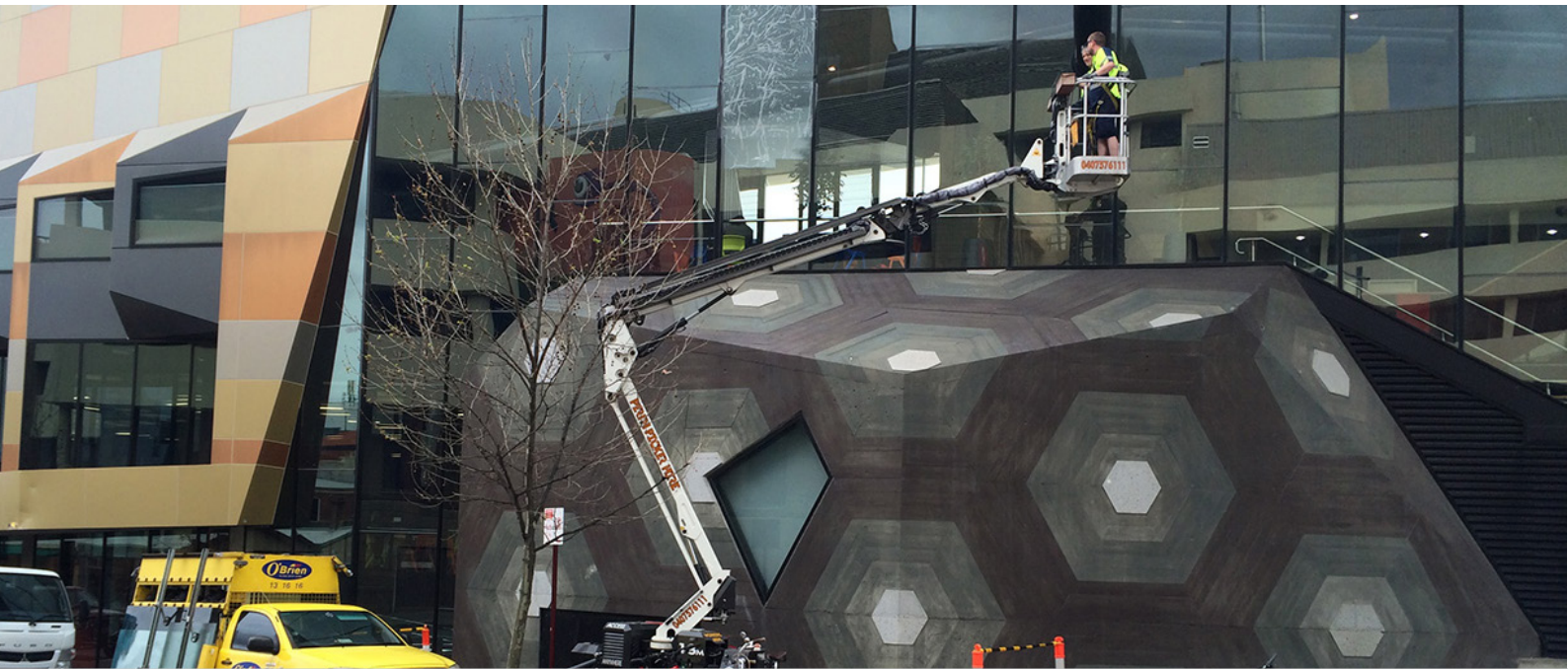


PB1890 18M

Cherry Picker Specification Guide

Version 1.1 - 24/6/2021





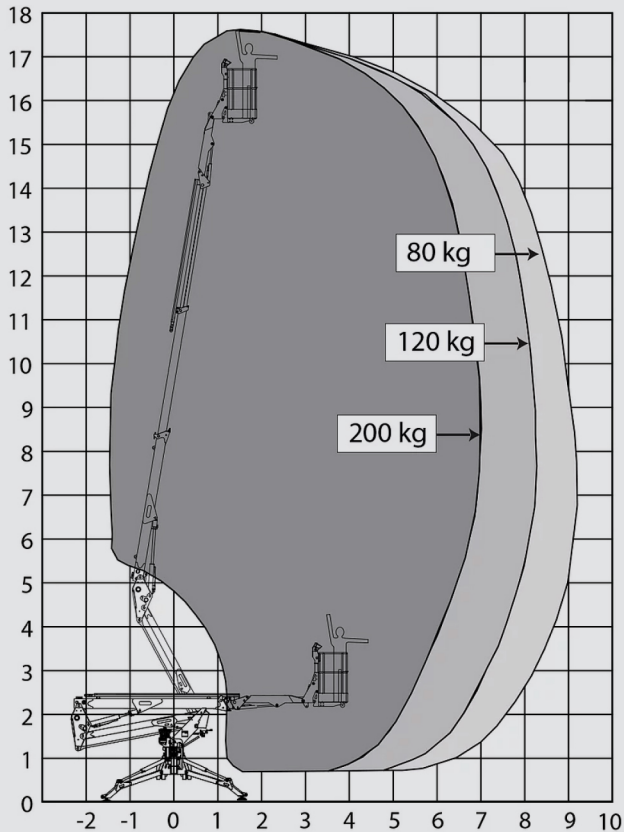
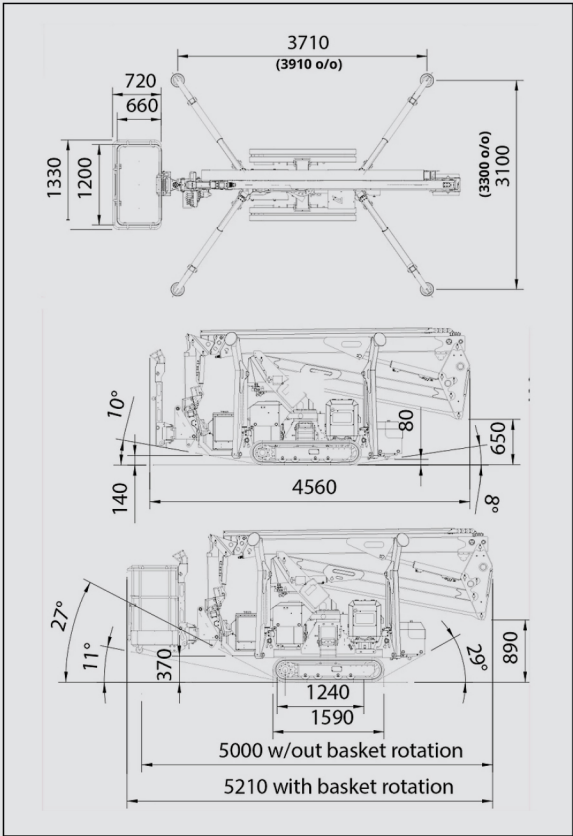
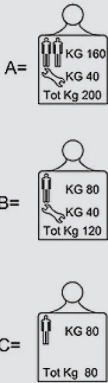
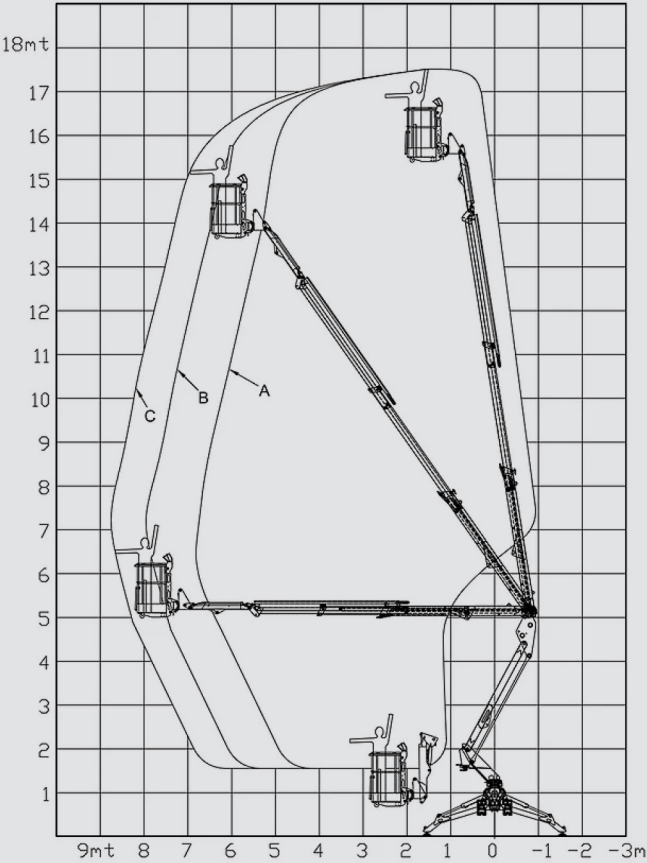
ABOUT PB1890

The 1890 is the most popular spider lift in Australasia, and not without a very good reason. Economical, very compact, simple to use, reliable, and excellent outreach. With its light weight design, the 1890 is very easy to transport. The tracks expand out and down to give excellent off-road ability. The 1890 has incredible stowed dimensions of only 792 x 1951 mm which allows it to drive through a domestic doorway. The extra-long travel stabiliser legs allows the 1890 to work on sloping sites and narrow paths. With its dual power function and super-compact dimensions, the 1890 is brilliant where a lot of outreach is required in confined indoor locations.

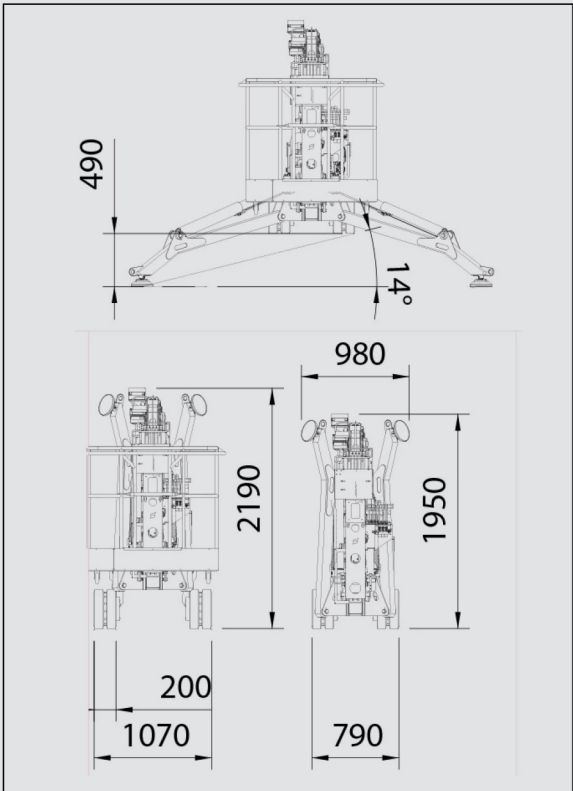
PB1890 SPECIFICATIONS

Max Working Height 17.60m	Basket Rotation 140°	Traffic Load Stabilised Narrow N/A	Honda Optional Power Source Kubota 14 Hp Diesel (Std on Pro)
Max Horizontal Working Outreach 8.70m	Ground Pressure Driving 47 kN/m ²	Auto Levelling Optional (Std on Pro)	Kubota Dual Power Options 240V Electric or Batteries
Max SWL Weight 200 kg	Max Stabiliser Force 17.4 kN	Max Slope For Stabilisers 14°	Expanding Tracks Std
Weight: Engine + 240V 2457 kg (2530 kg Pro)	Max Stabiliser Pressure (STD Foot Pad) 478 kN/m ²	Gradeability Lengthwise 27°	Drive Speed 1.5 km/h (2.5km/h Pro)
Engine + Batteries 2620 kg (2683 kg Pro)	Traffic Load Travelling 3.73 kN/m ²	Gradeability Sideways 15°	Radio Control Optional (Std on Pro)
Turret Rotation 360°	Traffic Load Stabilised Wide 2.28 kN/m ²	Standard Power Source Honda 13 Hp Petrol	Electric Emergency Lowering Optional

PB1890 TECHNICAL DRAWINGS



*Diagram shown with NO basket rotation



PERTH PICKER HIRE
THE TRACK MOUNTED SPECIALIST