

**ML810 8M**

Cherry Picker Specification Guide

Version 1.0 - 21/5/2021



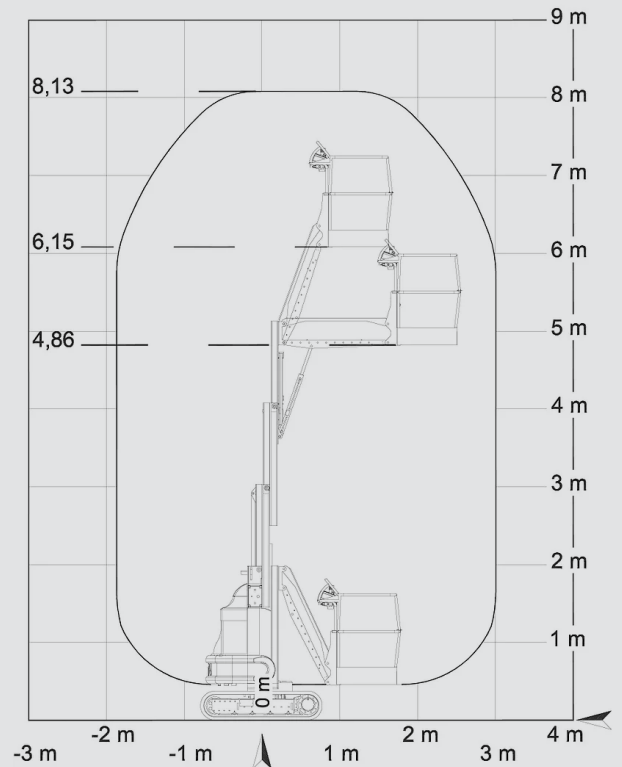
**ABOUT ML810**

The heavy duty construction of the ML810 and true all-terrain capability makes it the ideal machine for rough and tough sites. At only 1.2m wide and 1.98m high, doorway access is easily achieved. With gentle non marking tracks, the ML810 is just as at home indoors as outdoors. Weighing in at only 2.2 tonnes, the ML810 is very easily transported behind most tradesman's vehicles. A typical trailer package grosses at around 2.75 tonnes.

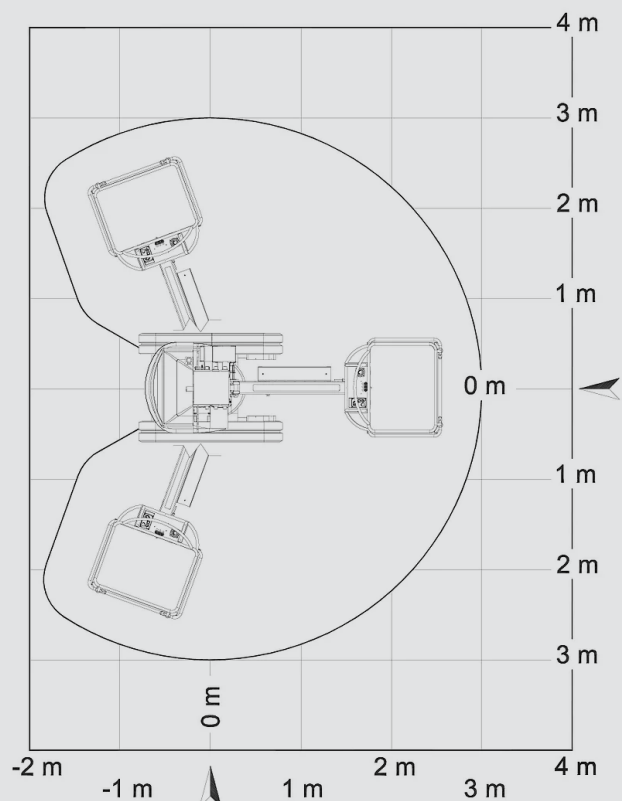
**ML810 SPECIFICATIONS**

<b>Max Working Height</b> 8.10m	<b>Height-Stowed</b> 1.98m
<b>Max Platform Height</b> 6.10m	<b>Turning Radius</b> Zero
<b>Max Horizontal Working Outreach</b> 3.00m	<b>Gradeability</b> 30%
<b>Lift Capacity/SWL</b> 200kg (2 persons)	<b>Maximum Slope for Elevation</b> 5°
<b>Basket Rotation</b> 2 x 110°	<b>Drive Speed-Stowed (Two Speed)</b> 1.8km/h
<b>Platform Width</b> 0.90m	<b>Drive Speed-Raised</b> 0.8km/h
<b>Platform Length</b> 0.80m	<b>Weight</b> 2200kg
<b>Length-Stowed</b> 2.47m	<b>Max. Ground Bearing Pressure</b> kN/m <sup>2</sup>
<b>Trackbase</b> 1.20m	<b>Standard Features</b> 575Ah (Centralized 24 volt battery filling system)
<b>Width</b> 1.20m	

**ML810 HEIGHT SPECIFICATIONS**



**ML810 ROTATION SPECIFICATIONS**



**PERTH PICKER HIRE**  
THE TRACK MOUNTED SPECIALIST