

PB3315 33M

Cherry Picker Specification Guide

Version 1.0 - 25/5/2021



ABOUT PB3315

The Platform Basket 33.15 is a unique performer offering exceptional up and over reach with the articulating telescopic boom and working envelope. The extra compact design to enhances mobility in confined spaces. Rotating the basket into its folded position allows the user to achieve minimum width when accessing tight areas. Exclusive to the Platform basket design, the expandable undercarriage enables superior spider mobility when adjusted to wide and reduced machine height when narrow.



PB3315 SPECIFICATIONS

Max Working Height

32.40m

Tracks Retracted

1.99m High

Standard Power Source/s

Kubota 22 Hp Diesel

Max Horiz Outreach

15.20m

Basket Dimensions

2.2 x 0.80m

Optional Power Sources

N/A

Max Horiz Outreach Edge of Basket

14m

Total Weight

6980kg

Drive System

Tracks

Lift Capacity/SWL

230kg

Max Ground Pressure Driving

68.6kN/m²

Expanding Tracks

Std

Weight/Outreach Limited (Yes/No)

No

Max Stabilizer Force

46.8kN

Drive Speed km/h

2.2

Turret Rotation

400°

Max Stabilizer Pressure Std

520kN/m²

2 Speed Drive

No

Basket Rotation

Up To 180°

Gradeability Length-Wise

16°

Remote Drive Control

Radio Std

Length With Basket

7.83m

Gradeability Sideways

17°

Battery Voltage

12

Length W/O Basket

6.57m

Max Slope For Stabilizers

15°

Basket Load Control

Std

Width Stowed(m) Tracks Retracted

1.39m

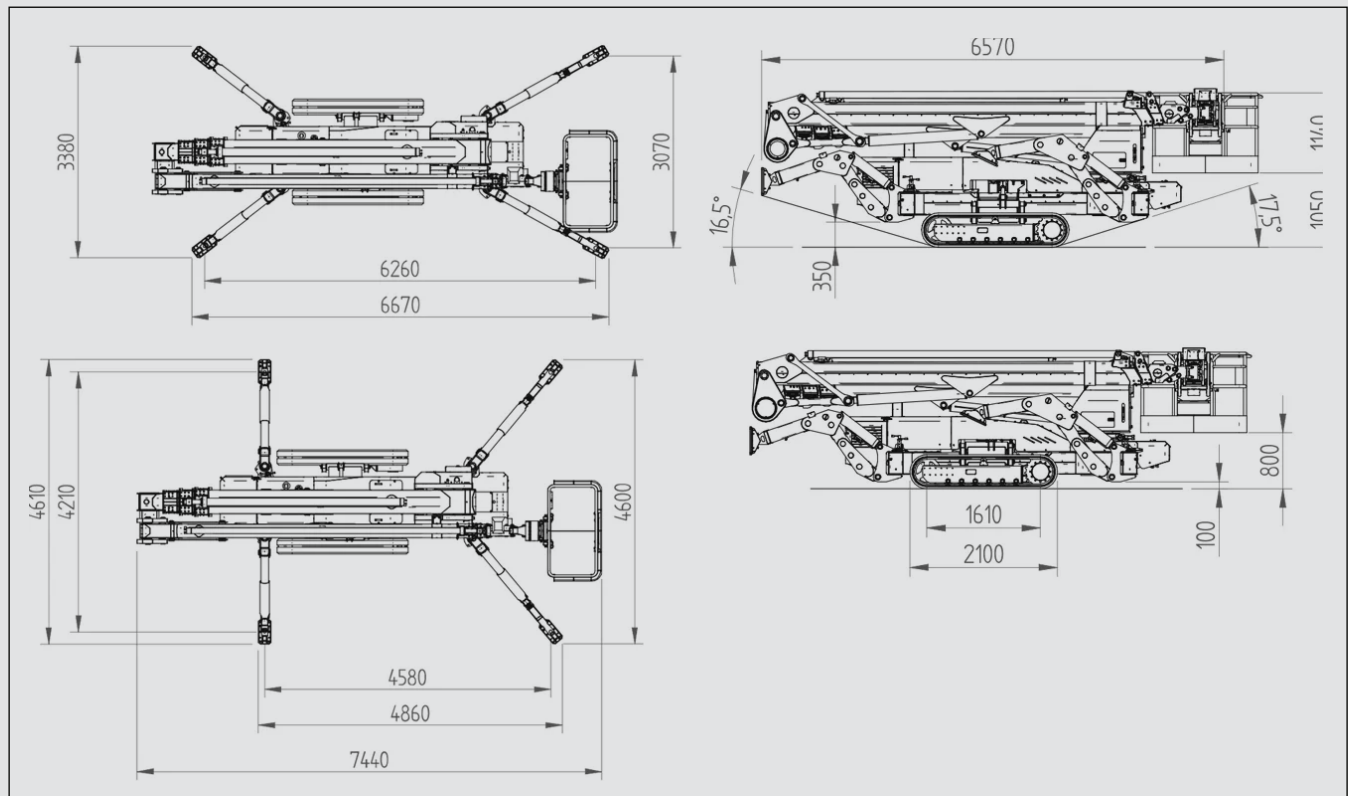
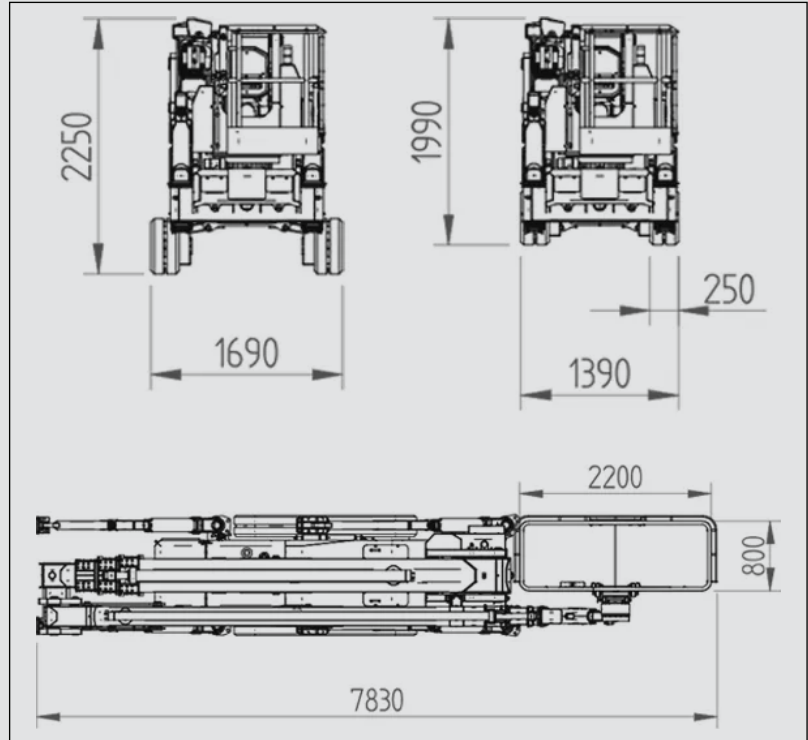
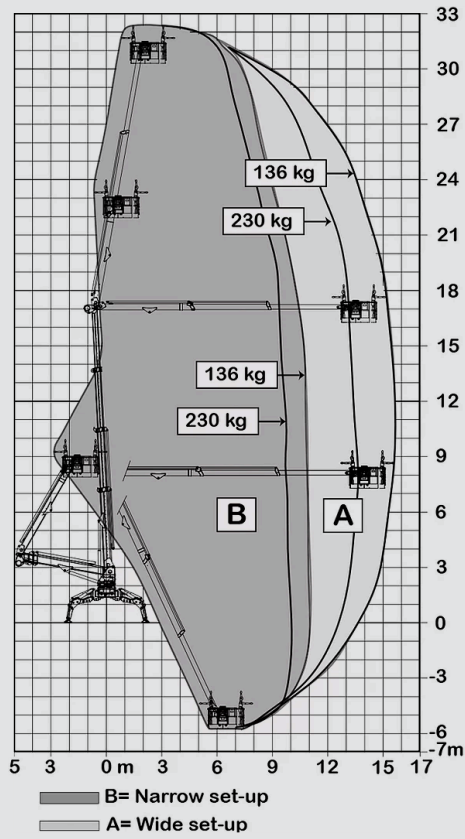
Stabilization System

(Radio/auto on PRO)

Electric Emergency Lowering

Std

PB3315 TECHNICAL DRAWINGS



PERTH PICKER HIRE
THE TRACK MOUNTED SPECIALIST