

**PB1890 18M**

Cherry Picker Specification Guide

Version 1.0 - 25/5/2021





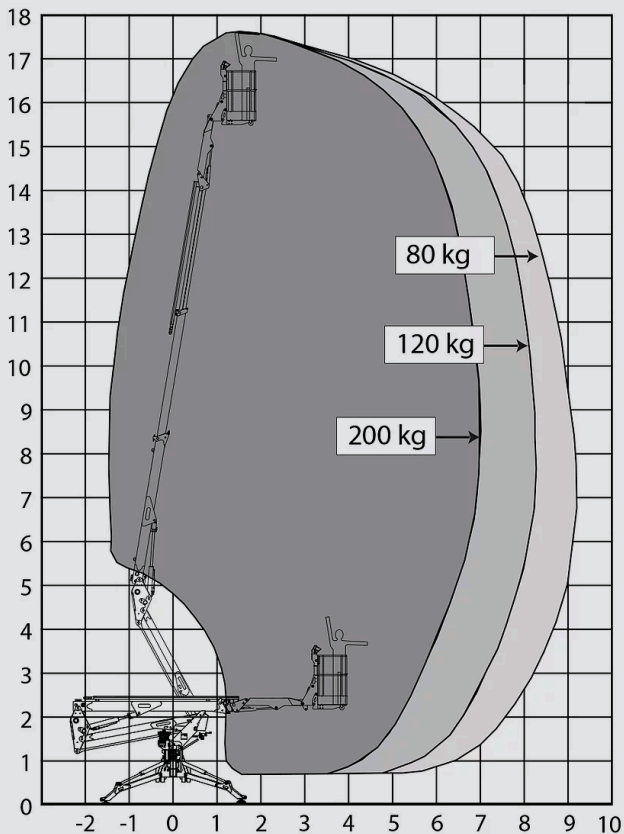
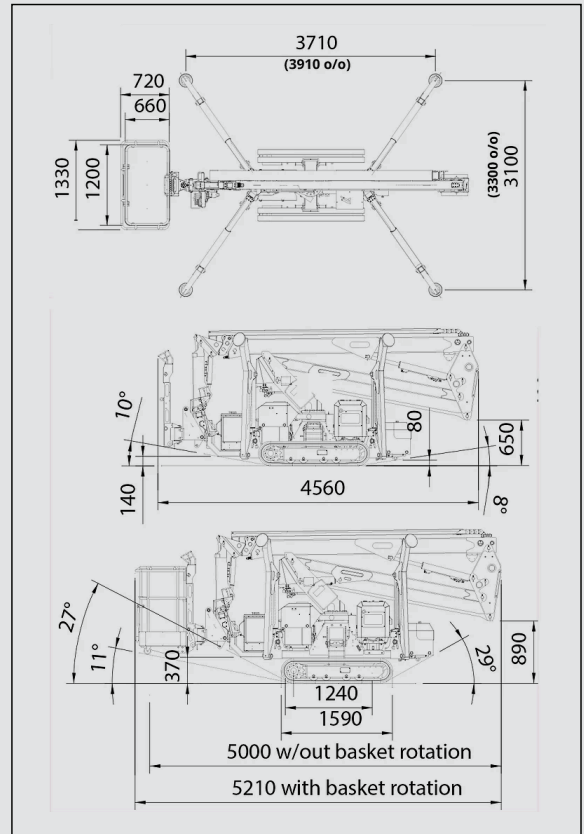
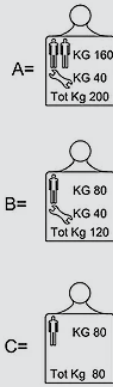
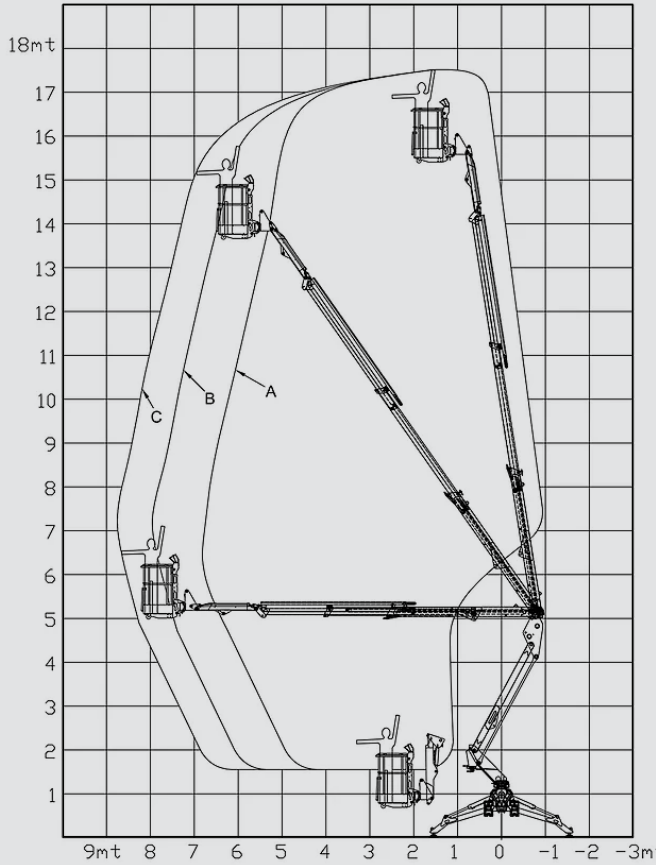
## ABOUT PB1890

The 1890 is the most popular spider lift in Australasia, and not without a very good reason. Economical, very compact, simple to use, reliable, and excellent outreach. With its light weight design, the 1890 is very easy to transport. The tracks expand out and down to give excellent off-road ability. The 1890 has incredible stowed dimensions of only 792 x 1951 mm which allows it to drive through a domestic doorway. The extra-long travel stabiliser legs allows the 1890 to work on sloping sites and narrow paths. With its dual power function and super-compact dimensions, the 1890 is brilliant where a lot of outreach is required in confined indoor locations.

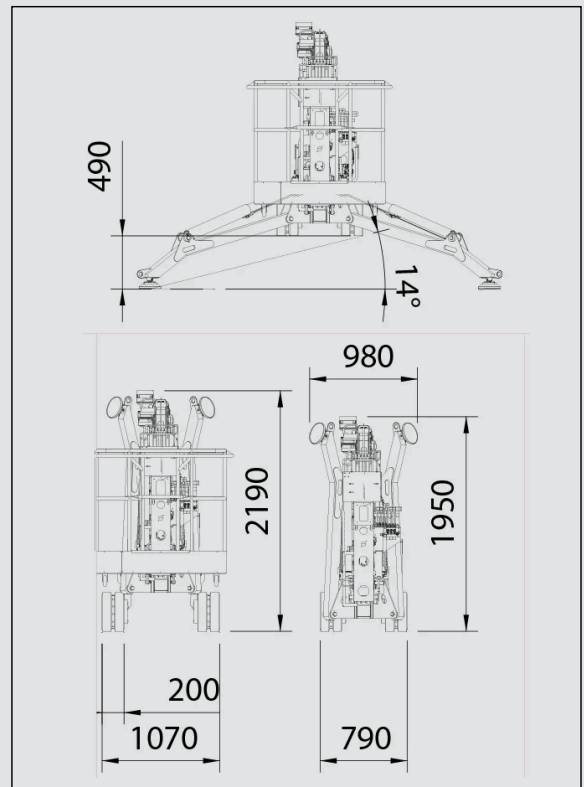
## PB1890 SPECIFICATIONS

<b>Max Working Height</b> 17.60m	<b>Basket Rotation</b> 140°	<b>Traffic Load Stabilised Narrow</b> N/A	<b>Honda Optional Power Source Kubota 14 Hp Diesel</b> (Std on Pro)
<b>Max Horizontal Working Outreach</b> 8.70m	<b>Ground Pressure Driving</b> 47 kN/m <sup>2</sup>	<b>Auto Levelling</b> Optional (Std on Pro)	<b>Kubota Dual Power Options</b> 240V Electric or Batteries
<b>Max SWL Weight</b> 200 kg	<b>Max Stabiliser Force</b> 17.4 kN	<b>Max Slope For Stabilisers</b> 14°	<b>Expanding Tracks</b> Std
<b>Weight: Engine + 240V</b> 2457 kg (2530 kg Pro)	<b>Max Stabiliser Pressure (STD Foot Pad)</b> 478 kN/m <sup>2</sup>	<b>Gradeability Lengthwise</b> 27°	<b>Drive Speed</b> 1.5 km/h (2.5km/h Pro)
<b>Engine + Batteries</b> 2620 kg (2683 kg Pro)	<b>Traffic Load Travelling</b> 3.73 kN/m <sup>2</sup>	<b>Gradeability Sideways</b> 15°	<b>Radio Control</b> Optional (Std on Pro)
<b>Turret Rotation</b> 360°	<b>Traffic Load Stabilised Wide</b> 2.28 kN/m <sup>2</sup>	<b>Standard Power Source</b> Honda 13 Hp Petrol	<b>Electric Emergency Lowering</b> Optional

**PB1890 TECHNICAL DRAWINGS**



\*Diagram shown with NO basket rotation



**PERTH PICKER HIRE**  
THE TRACK MOUNTED SPECIALIST